

# ANNUAL REPORT SUMMARY 2023

## COMMUNITY SUPPORT

Community Benefits:  
**\$72.4 Million**

Financial Assistance:  
**\$6.2 Million**

Grants to the Community:  
**\$2.1 Million**

Unreimbursed Care to Medicare Patients:  
**\$88.1 Million\***

\*Note: While the IRS does not recognize this as a Community Benefit, it is an additional contribution by Mary Washington Healthcare to the community.

## PATIENT CARE



Inpatient Admissions:  
**24,920**



Newborn Deliveries:  
**3,281**



Surgical Cases:  
**17,393**



Cardiology Procedures:  
**4,601**



Emergency Dept. Visits:  
**126,150**



Physician Visits:  
**515,792**

## FINANCIAL HEALTH

Expenses:  
**\$999.99 Million**

Revenue:  
**\$1.03 Billion**

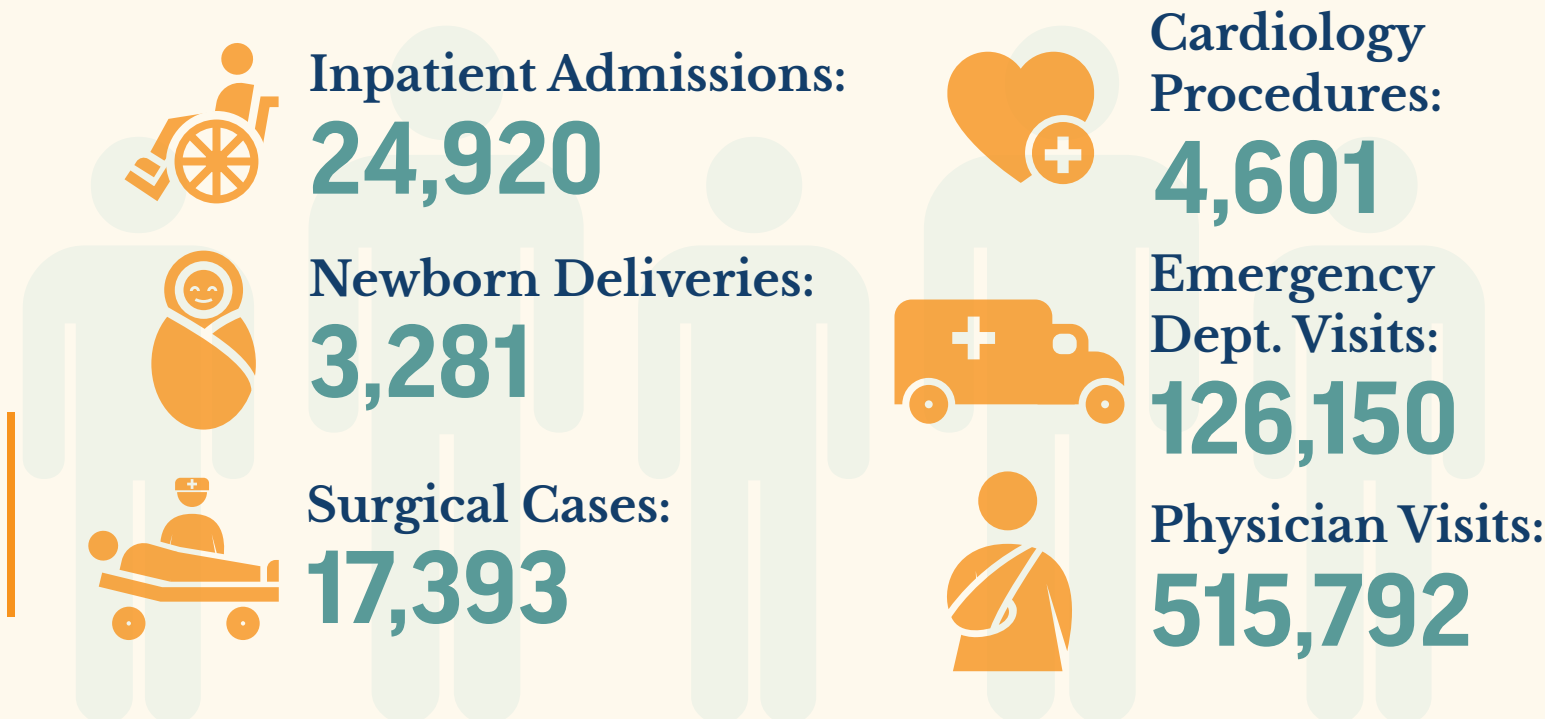
### Itemized Expenses (in Millions):

Labor expenses	\$484.5
Supplies	\$154.5
Professional fees	\$95.8
Contract services	\$79.5
General and administrative	\$65.9
Interest, depreciation, and amortization	\$53.3
Rent, utilities, and insurance	\$28.1
Medical claims	\$26.4
Other	\$11.9



# ANNUAL REPORT SUMMARY 2023

## PATIENT CARE



## COMMUNITY SUPPORT

Community Benefits:

**\$72.4 Million**

Financial Assistance:

**\$6.2 Million**

Grants to the Community:

**\$2.1 Million**

Unreimbursed Care to Medicare Patients:

**\$88.1 Million\***

\*Note: While the IRS does not recognize this as a Community Benefit, it is an additional contribution by Mary Washington Healthcare to the community.

## FINANCIAL HEALTH

Expenses:

**\$999.99 Million**

Revenue:

**\$1.03 Billion**

### Itemized Expenses (in Millions):

Labor expenses	\$484.5
Supplies	\$154.5
Professional fees	\$95.8
Contract services	\$79.5
General and administrative	\$65.9
Interest, depreciation, and amortization	\$53.3
Rent, utilities, and insurance	\$28.1
Medical claims	\$26.4
Other	\$11.9