



Mary Washington Healthcare

Annual Report Summary 2021

Community Support

Community Benefits:

\$58.6 Million

Financial Assistance:

\$14 Million

Grants to the Community:

\$600,000

Unreimbursed Care to Medicare Patients:

\$15.2 Million*

*Note: More than \$15.1 million in unreimbursed care was provided to Medicare patients. While the IRS does not recognize this as Community Benefit, it is an additional contribution by Mary Washington Healthcare to the community.

Financial Health

Expenses:

\$860.7 Million

Revenue:

\$894.9 Million

Itemized Expenses (in Millions):

Labor expenses	\$413.1
Supplies	\$148.8
Professional fees	\$81.9
Contract services	\$69.4
Interest, depreciation, and amortization	\$50.5
General and administrative	\$47.7
Rent, utilities, and insurance	\$24.2
Medical claims	\$13.5
Other	\$11.6

Patient Care



Inpatient Admissions:

24,543



Cardiology Procedures:

12,465



Newborn Deliveries:

2,981



Emergency Dept. Visits:

111,681



Surgical Cases:

16,050



Physician Visits:

399,372



Mary Washington Healthcare Annual Report Summary 2021

Community Support

Community Benefits:

\$58.6 Million

Financial Assistance:

\$14 Million

Grants to the Community:

\$600,000

Unreimbursed Care to Medicare Patients:

\$15.2 Million*

*Note: More than \$15.1 million in unreimbursed care was provided to Medicare patients. While the IRS does not recognize this as Community Benefit, it is an additional contribution by Mary Washington Healthcare to the community.

Financial Health

Expenses:

\$860.7 Million

Revenue:

\$894.9 Million

Itemized Expenses (in Millions):

Labor expenses	\$413.1
Supplies	\$148.8
Professional fees	\$81.9
Contract services	\$69.4
Interest, depreciation, and amortization	\$50.5
General and administrative	\$47.7
Rent, utilities, and insurance	\$24.2
Medical claims	\$13.5
Other	\$11.6

Patient Care



Inpatient Admissions:

24,543



Cardiology Procedures:

12,465



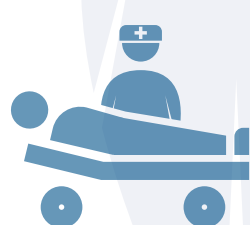
Newborn Deliveries:

2,981



Emergency Dept. Visits:

111,681



Surgical Cases:

16,050



Physician Visits:

399,372