

ANNUAL REPORT SUMMARY 2020



COMMUNITY SUPPORT

Community Benefits:

\$52.19 Million

Unreimbursed Care to Medicare and Medicaid Patients:

\$52.14 Million*

*Note: More than \$37.3 million in unreimbursed care to Medicare patients was also provided. While the IRS does not recognize this as Community Benefit, it is an additional contribution by Mary Washington Healthcare to the community.

Financial Assistance:

\$14.87 Million

Grants to the Community:

\$1,662,823

Expenses:

\$745.4 Million

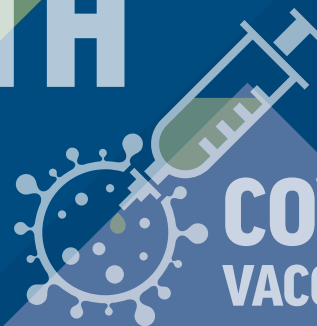
Revenue:

\$778.4 Million

Itemized Expenses (in Millions):

Labor expenses	\$348.8
Professional fees	\$69.6
General and administrative	\$37.9
Provisions for depreciation and amortization	\$41
Interest (Note 5)	\$9
Cost of goods sold from retail operations	\$4.9
Contract services	\$73.8
Supplies	\$126.9
Medical insurance claims	\$8
Utilities	\$5.1
Insurance	\$2
Rent	\$12.6
Other	\$5.7

FINANCIAL HEALTH



COVID-19 VACCINATIONS

196,491 Doses*

*Doses given December 2020 - July 2021

PATIENT CARE



Inpatient Discharges:

23,869



Surgical Cases:

15,108



Newborn Deliveries:

3,037



Emergency Dept. Visits:

97,066



Outpatient Visits:

MW Medical Group Visits:

187,610

Outpatient Medical Imaging Visits:

202,582

MW Urgent Care Visits:

8,628



COMMUNITY SUPPORT

Community Benefits:

\$52.19 Million

Unreimbursed Care to Medicare and Medicaid Patients:

\$52.14 Million*

*Note: More than \$37.3 million in unreimbursed care to Medicare patients was also provided. While the IRS does not recognize this as Community Benefit, it is an additional contribution by Mary Washington Healthcare to the community.

Financial Assistance:

\$14.87 Million

Grants to the Community:

\$1,662,823

Expenses:

\$745.4 Million

Revenue:

\$778.4 Million

Itemized Expenses (in Millions):

Labor expenses	\$348.8
Professional fees	\$69.6
General and administrative	\$37.9
Provisions for depreciation and amortization	\$41
Interest (Note 5)	\$9
Cost of goods sold from retail operations	\$4.9
Contract services	\$73.8
Supplies	\$126.9
Medical insurance claims	\$8
Utilities	\$5.1
Insurance	\$2
Rent	\$12.6
Other	\$5.7

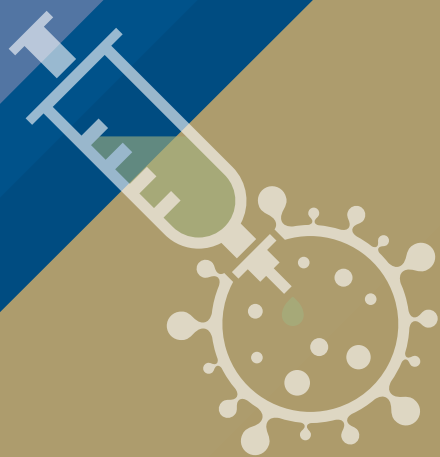
FINANCIAL HEALTH



COVID-19 VACCINATIONS

196,491
Doses*

*Doses given Dec. 2020 - July 2021



PATIENT CARE

Inpatient Discharges:



23,869

Surgical Cases:



15,108

Newborn Deliveries:



3,037

Emergency Dept. Visits:



97,066

Outpatient Visits:



MW Medical Group Visits:

187,610

Outpatient Medical Imaging Visits:

202,582

MW Urgent Care Visits:

8,628



Mary Washington Healthcare

ANNUAL REPORT SUMMARY 2020